



**820A Henry Lawson Drive Picnic Point NSW**

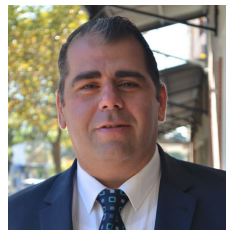
4 3 4

This unique split level four bedroom home provides you with the space and privacy you desire. Set on over 1,000 sqm of land, this picturesque family home with a riverside setting is peacefully nestled well back from the street and showcases a panoramic view of the Georges River.

**Type** : House  
**Land Size** : 1008 sqm  
**View** : <https://www.aspirepropertyagents.com.au/7517866>

Features include:

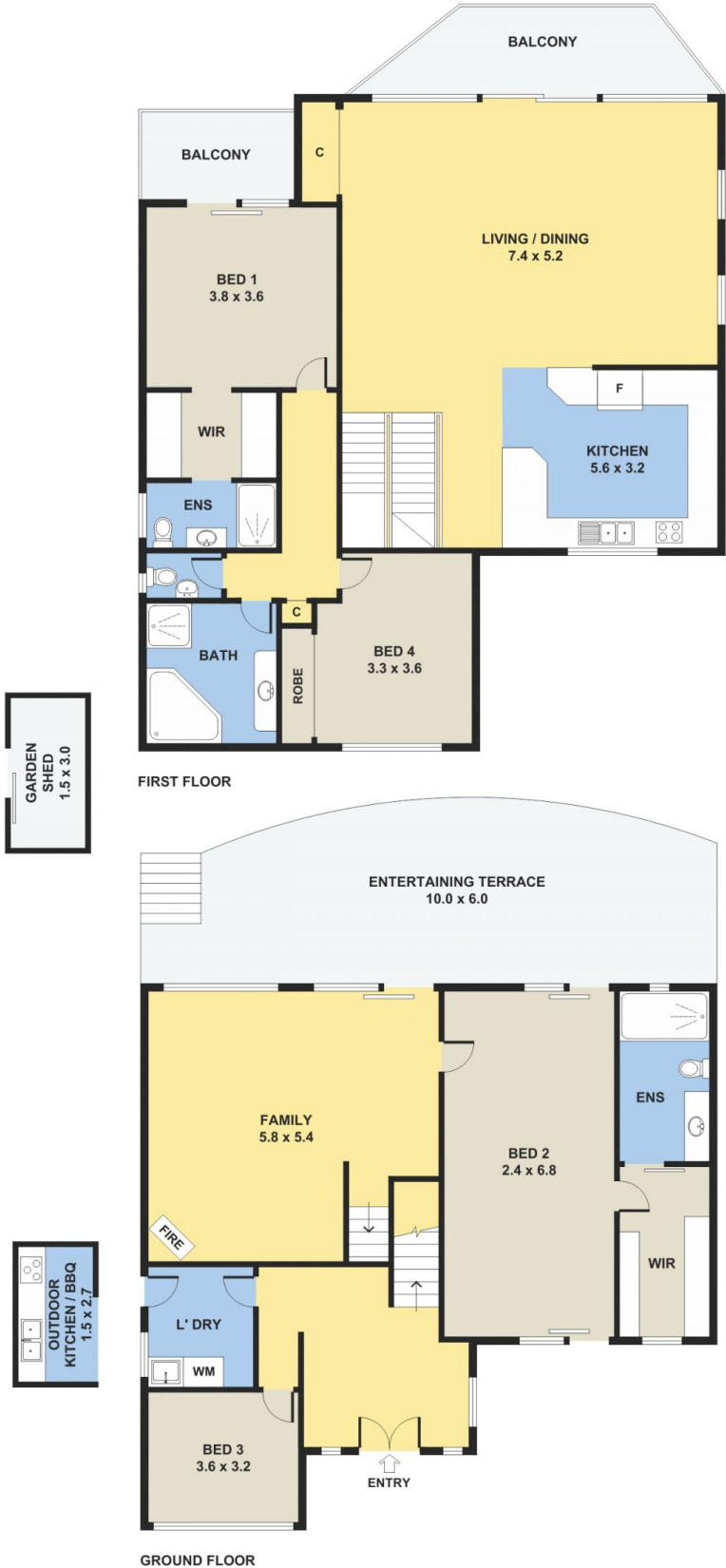
- Four bedrooms (two with ensuites)
- Spacious living areas with balcony access overlooking the Georges River
- Gourmet kitchen with ample storage space & dishwasher
- Family room which leads onto the terrace
- Air conditioning
- Internal laundry
- Outdoor cooking facilities



**Sam Ayache**  
02 8507 2044

[For full version visit the website](https://www.aspirepropertyagents.com.au)

# 820a Henry Lawson Drive, Picnic Point



Please note: All stated dimensions are approximate only. Particulars given are for general information only and do not constitute any representation on the part of the vendor or agent.

