



7/3-3A Grainger Avenue Ashfield, NSW



## FRESH, BRIGHT & QUIET

Quietly positioned in a peaceful cul-de-sac, this is the perfect opportunity for a first home buyer to enter the market or an investor to add a property to their investment portfolio. Situated on the middle floor, this recently renovated two bedroom unit is located close to Ashfield Station & shops.

Features include:

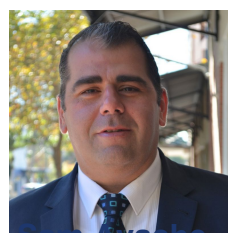
- Two bedrooms with built-in wardrobes
- Open plan living and dining area
- Timber floorboards
- Modern kitchen with ample storage
- Internal Laundry
- Close to Ashfield Train Station, Shops & Schools

\* All information contained herein is gathered from sources we believe to be reliable. However, we cannot guarantee its accuracy and interested persons should rely on their own enq

**Council Rates:** \$354.58 p/q

**Water Rates:** \$180.38 p/q

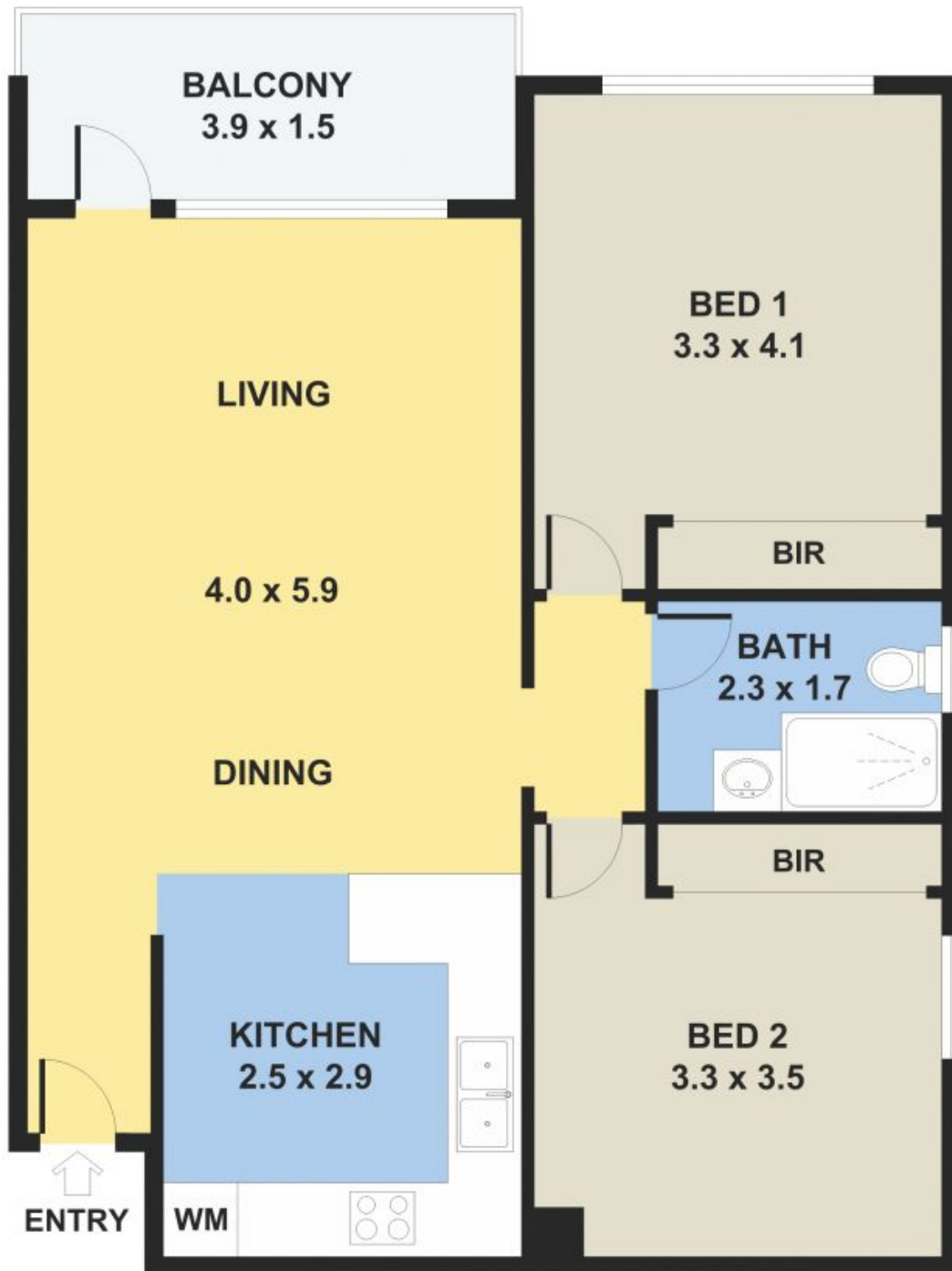
**Strata Rates:** \$841.85 p/q



**Sam Ayache**

0414 876 680

# 7/3a Grainger Ave, Ashfield



Please note: All stated dimensions are approximate only. Particulars given are for general information only and do not constitute any representation on the part of the vendor or agent.

