



2/1 Garnet Street Rockdale NSW

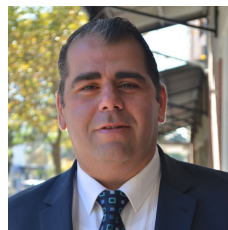
2 

Situated in a central location between the Princes Hwy & West Botany St, this recently renovated factory unit is ideal for many uses including office space, showroom, supply & distributing and much more.

Features include:

- Zoning: E4 - General Industrial
- Total area: 194 sqm (111 sqm & 83 sqm Mezzanine)
- 5.20m Height Clearance
- Ultra modern office fit out
- Kitchen & Bathroom facilities
- Air conditioned
- Alarm system
- Video intercom
- Truck access

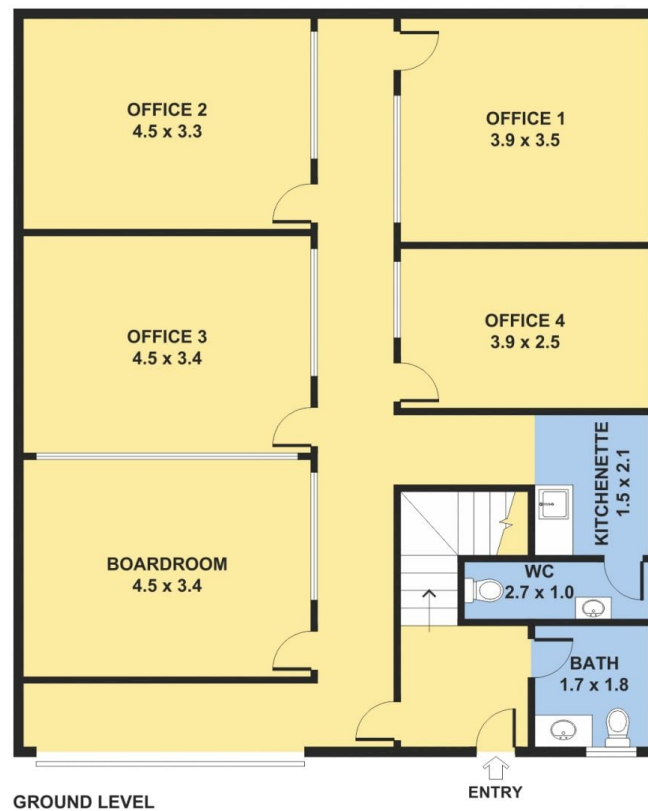
Type : Industrial
Building Size : 194 sqm
Land Size : 158 sqm
View : <https://www.aspirepropertyagents.com.au/8293204>



Sam Ayache
02 8507 2044

[For full version visit the website](https://www.aspirepropertyagents.com.au)

2/1 Garnet Street, Rockdale



Please note: All stated dimensions are approximate only. Particulars given are for general information only and do not constitute any representation on the part of the vendor or agent.

