



27 Wickham Street Arncliffe NSW

4 🏠 2 🚗 2 🚗

Set on 1,348 sqm, this spacious four bedroom house & granny flat is an ideal investment or a potential development site (STCA).

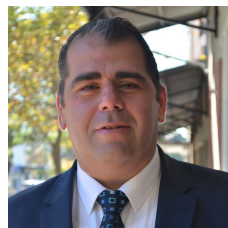
Centrally located and ideally positioned between Arncliffe transport hub/Wolli Creek shopping precinct, 5km to Sydney International Airport and approximately 16km to Sydney CBD.

Key features include:

- * 1,348 sqm (subject to survey)
- * 17.07 m frontage (subject to survey)
- * Zoning: R3 Medium Density
- * Height: 12 m
- * FSR: 1.25:1
- * Four bedrooms with built ins

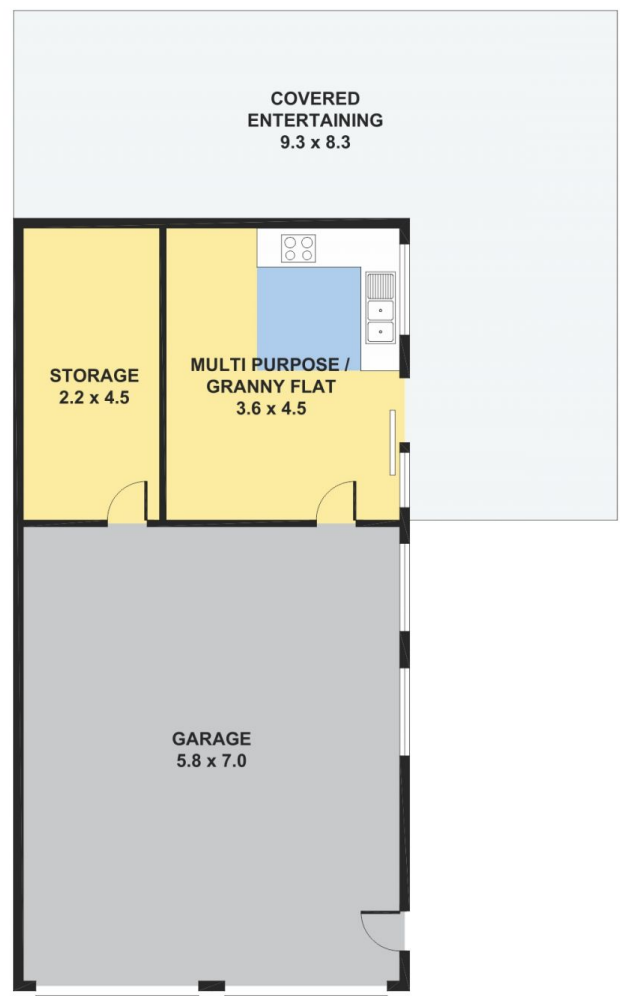
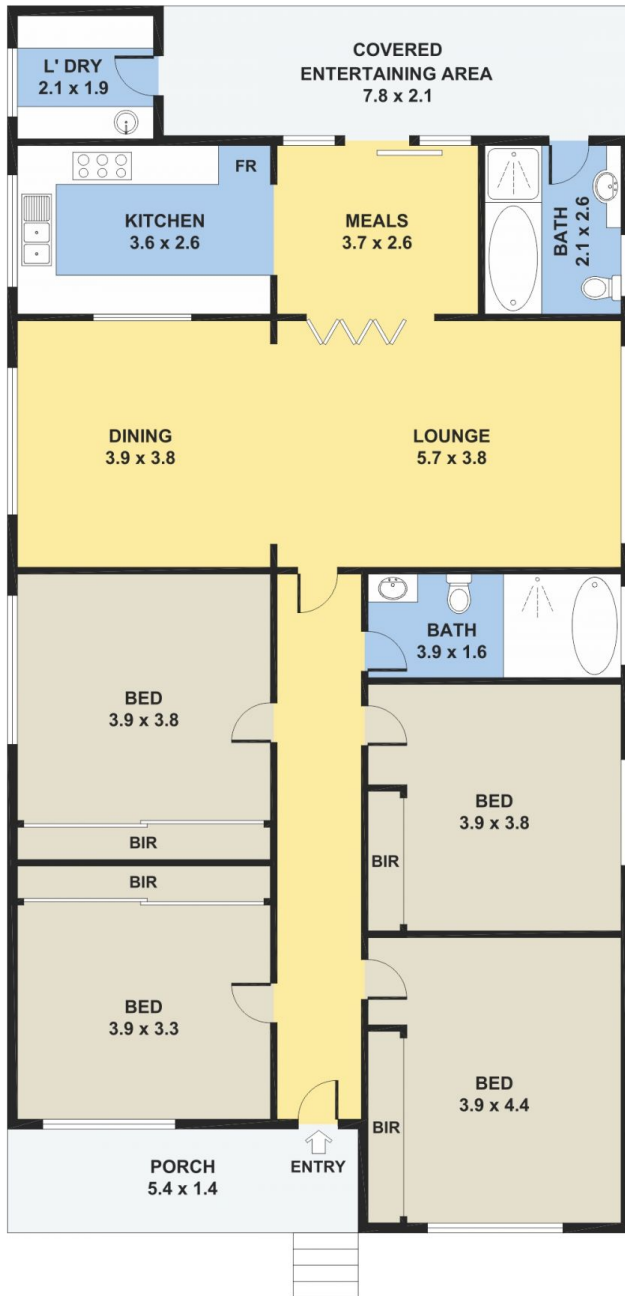
[For full version visit the website](https://www.aspirepropertyagents.com.au/8482195)

Type : House
Price : Price Guide: \$2,500,000.00 - \$2,600,000.00
Land Size : 1348 sqm
View : <https://www.aspirepropertyagents.com.au/8482195>



Sam Ayache
02 8507 2044

27 Wickham Street, Arncliffe



Please note: All stated dimensions are approximate only. Particulars given are for general information only and do not constitute any representation on the part of the vendor or agent.

