



Revesby Heights

Aspire Property Agents are delighted to present to the market, a remarkable opportunity to acquire a rare development site (STCA). Located in Revesby Heights which is approximately 23 kms south west of Sydney CBD and 5 kms south west of Bankstown. This unique property is located within close proximity to the Georges River.

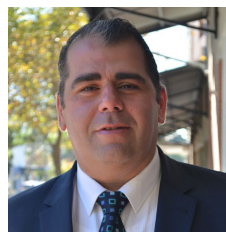
Key features include:

- Total area: 3,213 sqm
- Frontage: 35.22 m (subject to survey)
- Zoning: R2
- Floor space ratio: 0.5:1
- Height of building: 9 m

For more information, please contact Sam Ayache on

[For full version visit the website](https://www.aspirepropertyagents.com.au/8497448)

Type : Development
Price : CONTACT AGENT
Land Size : 3213 sqm
View : <https://www.aspirepropertyagents.com.au/8497448>



Sam Ayache
02 8507 2044